

2017
CLASS A GAS



BOUNDER

2017 FLEETWOOD BOUNDER



REVGROUP



21 REASONS WHY FLEETWOOD IS AMERICA'S FAVORITE

Mile after mile, decade after decade, more families trust Fleetwood. The open road is our proof. With more Fleetwood motorhomes on the road today than any other manufacturer*, our brand prides itself on building dependable products that help families reconnect one journey at a time — over and over again. At Fleetwood, we constantly redefine value because understanding your every need is just the start to delivering peace-of-mind at every turn.



F-21 Advantage: Fleetwood 21st century engineering, manufacturing, and materials

Fleetwood RV offers a 21st century, industry-leading advantage—a quality construction approach to motorhome engineering, manufacturing and materials. The “F” stands for Fleetwood RV. The “21” stands for 21st century materials and construction techniques. F-21 is demonstrated by 21 key proof points that deliver unique advantages to Fleetwood owners and illustrate the quality for which Fleetwood RV is known industry-wide.

*Based on IHS Automotive, Polk Recreational Vehicles in Operation (RVIO) as of 7/1/13.



The Bounder 35K is shown in Mesa Granite décor and Nottingham Cherry cabinetry.



BOUNDER

The Fleetwood Bounder has been connecting families for more than 30 years. One of the most popular Class A Gas motorhomes on the road, Bounder elevates comfort to an art form. Select-model, L-shaped sofas are perfect for families, while several floorplans feature a rear bathroom, plus another half bath. High-end standards, like LG solid-surface countertops and diamond-pattern residential seating, set the Bounder apart.

TOP FEATURES

- Solid Surface Tops & Backsplash Throughout Living Area & Lavy
- 12" x 24" Composite Tile Floor Throughout
- Auto Generator Start
- Power Driver Seat
- Recessed Cooktop w/Solid Surface Covers
- Oversized Window(s) in Galley and Living Room
- Stainless Steel Convection Microwave Oven
- Hide-A-Loft™ P2K For Comfort, Function, & Finish
- Exterior Entertainment Center
- Residential Refrigerator



STANDARDS AND OPTIONS

INTERIOR THROUGHOUT

- 100-Gallon Fresh Water Holding Tank
- 10-Gallon Quick Recovery Water Heater w/Direct Spark Ignition (Gas/Electric)
- 12" x 24" Composite Tile Flooring
- 120V/12V AC/DC Converter
- 13,500 Btu/h Front A/C
- 13,500 Btu/h Rear A/C w/Heat Pump
- 20,000 & 25,000 Btu/h Furnace (34T)
- 30,000/20,000 Btu/h Furnace (36H, 36X, 36Y)
- 34,000 Btu/h Furnace (33C, 35K)
- (4) 6V Deep-Cycle House Batteries
- Auxiliary Batteries w/Disconnect Switch
- Blu-ray® Home Theater Sound System
- Deluxe Roller Bearing, Full Extension Drawer Guides & Transit-Ship Locks
- Demand Water Pump w/Filter
- Dual Roof A/C High-Efficiency w/ Solar Panel, Chill Grills & Bedroom Heat Pump
- Energy Efficient LED 3" Puck Flush Mount Lighting Throughout
- Energy Management System
- Fabric Window Treatments w/ Wood Accents
- Fan-Tastic® Power Roof Vent (Multiple Locations)
- Flat Interior Soft-Touch Vinyl Ceiling w/Ducted Air
- Full HD Video System
- Full-Length, Metallic A/C Ducting
- Hardwood Crown Molding Throughout at Ceiling

- Hardwood Raised Panel Cabinet Doors Upper & Lower w/Hidden Hinges
- IllumaPlex™ Electronic Control System
- Neutral Loss Protection
- Ozite Lined Shelves
- Polished Solid-Surface Countertops (Galley & Lavy)
- Manual Day/NightDouble Roller Shades Throughout - Black
- Raised Panel Doors
- Satellite Radio Ready
- Solid Divider Doors
- Tuff-Pex™ Plumbing System
- TV Antenna w/SignalBooster
- Water Heater Bypass Valve
- Water Pump Switches in Multiple Locations
- Whole-Coach Water Filtration System
- Hardwood Drawers
- CSA Package (Canadian Specs)
- Hide-A-Loft™ P2K™ Drop Down Queen Bed 60" x 80" w/24" LED TV
- Winegard® Stationary Satellite System
- King Dome Satellite System



DRIVER CONVENIENCE

- 110-Volt AC Outlet at Passenger Area
- 12- Volt & USB Accessory Ports
- AM/FM/DVD Touch Screen Radio w/CD Player, Satellite Radio Ready
- A/C Heater Combo
- Auto Generator Start Switch
- Auxiliary Emergency Start Assist Switch on Dash
- Battery Disconnect System
- Co-Pilot Integrated Dash Workstation & Large Console Storage Drawer
- Dash Fans
- Driver/Passenger Captain's Chairs w/Diamond Pattern Lumbar, Contrasting Baseball Stitch, Comfort Fit Foam Design, & Reclining Back/Swivel

- Driver 6-Way Power Controls
- Driver/Passenger Cup Holders, Reading Lights, and Pedestal Table
- Driver/Passenger Power Sun Visors, Power Roller Shade & Manual Day/Night Roller Shades - Black
- Dual Monitor Panel in Dash
- Electronic Cruise Control
- High Output Dash Heat & Air Conditioning
- Intense Halogen Projector Headlamps
- Momentary Battery Booster Switch - Connecting Chassis & House Batteries
- Power Heated Remote Mirrors
- Radio Switch Main/Auxiliary Power
- Seat Belts - 3-Point Driver & Passenger w/Adjustable Straps

DRIVER CONVENIENCE CONTINUED

- Soft-Touch Automotive Dash
- Steering Wheel w/Tilt
- Windshield Wipers w/Delay
- Heated Side Vision Mirrors w/ Integrated Turn Signal & Cameras
- Removable Cockpit Floor Mat
- Premium Radio Upgrade

GALLEY

- Adjustable Cabinet Shelves
- Brushed-Nickel Finish Cabinet Hardware & Faucet
- Convenient Galley Slide-Out Cabinet w/Shelf (Select Floor Plans)
- Deep Double-Bowl Under-Mount Stainless-Steel Sink
- Demand Water Pump
- Large Slide-Out Dinette Drawers w/Latches - Under Dinette
- Large Galley Window
- Polished Solid Surface Countertops, Sink & Stove Top Covers
- Power Ceiling Vent Fan
- Recessed 3-Burner Cooktop
- Residential Refrigerator w/Platinum Exterior
- Single-Lever Galley Faucet w/Pullout Sprayer
- Sink Cover/Cutting Board
- Stainless Steel Convection Microwave Oven
- Tile Backsplash w/Stainless Accents
- Toe Kick
- Wastebasket
- 3-Burner Range w/Oven

BEDROOM

- 24" LED HDTV w/Storage Behind (36X, 36Y)
- 32" LED HDTV w/Storage Behind (33C, 34T, 35K, 36H)
- Bedsprad w/Integrated Shams & Accent Pillows
- Designer Headboard
- Dual Flat-Panel Monitors (36H)
- Exclusive Dream Easy Mattress
- Lift Up Bed w/Under Bed Storage
- Reading Lights in Bed Overhead Cabinets
- Rear Speakers
- Remote Generator Start
- Slide-Out w/2 Windows
- USB Port/120V Outlet
- King Bed (33C, 35K, 36H)
- Washer/Dryer Combo

BATHROOM

- Accessories: Towel Bar & Toilet Paper Holders - Satin Nickel
- Bath Door w/Residential Passenger Lock
- Deluxe Hardwood Medicine Cabinet w/Mirror
- Fiberglass Shower
- Glass Shower Door - Rain Glass
- Hardwood Bath Door/Trims
- Metal Shower Head w/On/Off, Sliding Adjustable Bar, Soap Dish & Matching Dual Valve Faucet
- Residential Brushed Nickel Single Handle Faucet w/Large Sink
- Residential Porcelain Sink
- Residential Water Saver & Vacu-Flush Porcelain Toilet (33C, 34T, 35K, 36H)
- Residential Water Saver & Porcelain Toilet (36H, 36X, 36Y)
- Skylight in Shower/Roof Vent w/12V Fan
- Solid-Surface Countertops w/ Solid-Surface Backsplash
- Toilet Tank San-T-Flush™ System
- Window Treatment (34T, 35K, 36H)

SAFETY/CONVENIENCE

- 10-ABC Fire Extinguishers
- Battery Access Entry Step Cover
- Battery Disconnect
- Carbon Monoxide, Propane & Smoke Detector/Alarm
- Egress Windows
- Entry Door Manual Roller Shade
- Exterior & Interior Entry Assist Handle
- GFI Circuit Protection
- Master Light Switch at Entry For All Storage Compartments
- Multiple Seatbelt Locations
- Rubber Entry Step w/ABS Sides
- Steel Constructed Entry Step Box

LIVING ROOM

- 40" LED HDTV w/Storage Behind TV (Select Floor Plans)
- Electric Fireplace
- Entry Assist Handle
- Euro Recliner (34T, 36Y)
- Facing Dinette
- Home Theater Sound System
- Oversized Windows
- Residential Seat Styling
- Sofa w/Diamond Pattern Lumbar Contrasting Baseball Stitch & Comfort Foam Design
- Free-Standing Dinette w/Credenza



EXTERIOR THROUGHOUT

- 2000-Watt Pure Sine Inverter
- 4-Color Full-Body Premium Paint
- 5.5 kW Onan® MicroQuiet Generator
- 50-Amp Service
- Fiberglass Wheel Well Skirts
- Antenna - Unidirectional King Controls Jack Antenna
- Automotive Style Soft Dash
- Automotive Style Windshield Wiper System
- Awning - Single Wall Mounted Legless Patio Awning w/LED Lighting & Bump Sensor Retract - Carefree
- Awning - Slide Out Toppers Above All Slide Outs - Carefree
- (4) 6V Deep Cycle House Batteries
- Black Instrument Gauges w/ Electronic Information Center
- Corrosion Resistant Steel Luggage Door Hinges
- Daytime Running Lights
- Door Side Area Patio Light
- Driver Side Area Patio Light Above Service Center
- Entrance Door - Radius Trimmed Door w/Black Interior & Screen Door, Deadbolt Lock, Frameless Window Rotary Latch, & Exterior Lighted Power Entry Step
- Exterior Service Station - Including Water Pump Switch, Exterior Shower, Black Tank Flush, City Water Hookup
- Exterior Wall Mounted Entertainment Center - w/32" LED TV, AM/FM/CD/DVD Radio
- Drainage Valves
- Fiberglass Aerodynamic Front Cap w/ Automotive Headlighting & Hood Insert

- Fiberglass Rear Cap w/Automotive Lighting & Rear Tank Access
- Formed Grille & Air Intake
- Front/Rear LED Clearance & Marker Lighting
- Front/Rear Mud Flaps
- Gravity Water Fill
- Large Lighted Roto-Molded Polyethylene Compartments
- One Piece TPO Domed Roof
- Protective Front Mask
- Prep for Roof-Mounting Satellite Dish
- Remote Power/Heated Mirrors w/Turn Signals & Cameras
- Side-Swing, Insulated Aluminum Luggage Doors w/Single Paddle Latch
- Solar Electrical Panel Prep
- Surge Guard Transfer Switch
- Tinted Slider Driver/Passenger Windows
- Underhood Utility Light
- 12V 3GPM High Capacity Shurflo Water Pump
- Large Dark Tinted Frameless Dual Pane Windows Throughout

OPTIONS

- Rear Ladder
- Roof Vent Rain Covers



STORAGE

- Continuous One-Piece Compartment Bulb Seal
- Gas Lift Strut Supports (Select Locations)
- Pass-Through Storage (Select Models)
- Rotocast Molded Storage Boxes

BODY STRUCTURE

- Aluminum Bus-Style Side Swing Luggage Doors
- Basement Storage Lighting w/ Individual Switches and Master Switch Inside Entry
- Corrosion Resistant Aluminum Tube Hull Framing
- Dryseal™ Edge Coating Water-Wicking Wall Edge Coating
- Electric Main/Bedroom Wardrobe/Kitchen Slide Out Systems
- F-21 Construction & Manufacturing Technology
- Full Coverage Heavy Duty Undercoating
- Heated Fresh Water & Holding Tank Compartments
- Steel Constructed Entry Step Box
- Power Platform® Construction
- Powerframes™ Precision, Welded Aluminum Interlocking Frames
- Powerlock System™ (Interlocking Floors, Walls, & Ceiling)
- Radiused Entry Door
- Raised Space Frame Foundation
- Rotational Molded Easy To Clean Service Compartment
- Solid Bead-Foam Engineered Fit Insulation™
- Vacu-Bond™ Integrated Walls
- Vacu-Bond™ Aluminum Framed Sidewalls, Roof and Floor Construction

AUTOMOTIVE

- 4-Point Automatic Levelers
- Trailer Hitch w/7-Pin Electrical Hook-Up

LX PACKAGE

- Onan® 7.0kW Generator
- 15,000 Btu/h w/Heat Pump Front A/C
- Power Cord Reel
- Doorside & Front Undercarriage Lighting
- Exterior Chrome Package (Luggage Compartment Handles & Mirrors w/Side View Cameras)
- Solid Surface Countertops Throughout

SAFETY/CONVENIENCE

- 50 Amp Electrical Service
- Amber Porch Light w/Interior Switch
- Automatic Hydraulic Leveling Jacks
- Automotive Safety Glass
- Color Rear-Vision Camera w/One-Way Audio
- Daytime Running Lights
- Entry Door w/Screen Door & Deadbolt Lock
- High Mounted Large Taillights
- Hydraulic 4-Wheel Disk Brakes w/ABS
- Large, Heated Remote Rear-View Mirrors w/Side-View Cameras
- Lighted Entry Assist Handle
- Power Electric Step
- Radius Tinted Windows
- Underhood Utility Lights
- Utility Compartment w/Exterior Shower
- Winterizing Pick-Up Tube



Autumn Wheat



Nottingham Cherry



1 | Sofa 2 | Accent 3 | Bedspread 4 | Countertop 5 | Flooring 6 | Carpet

Eclectic Bronze



1



2



3



4

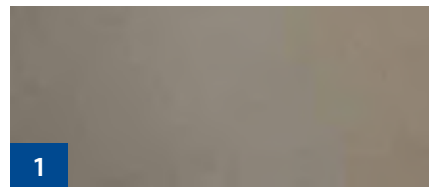


5



6

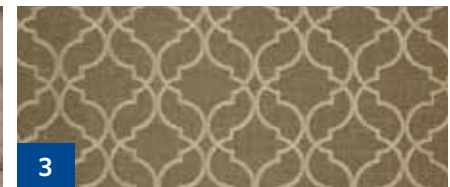
Mesa Granite



1



2



3



4

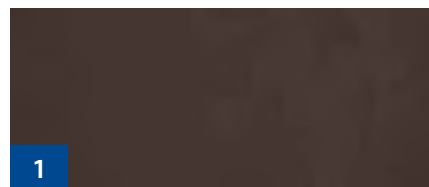


5



6

Redwood



1



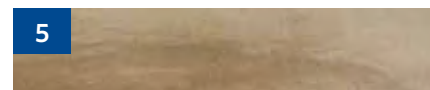
2



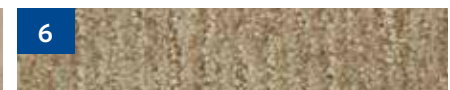
3



4



5



6

Autumn Breeze



Caramel Kiss



Chocolate Malt



Glistening Slate



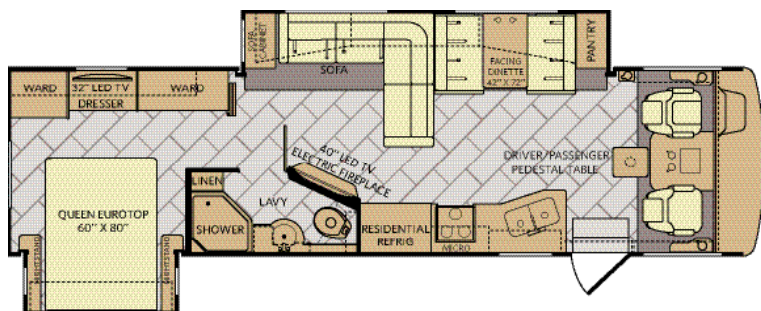
Winter Haven



FLOORPLANS & SPECIFICATIONS

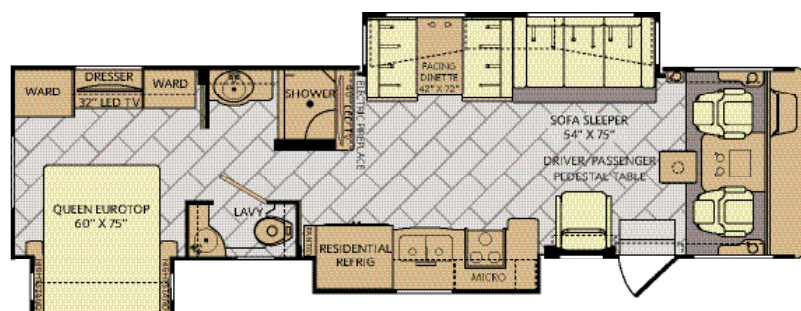
33C

Options: 113, 126, 220, 833, 852



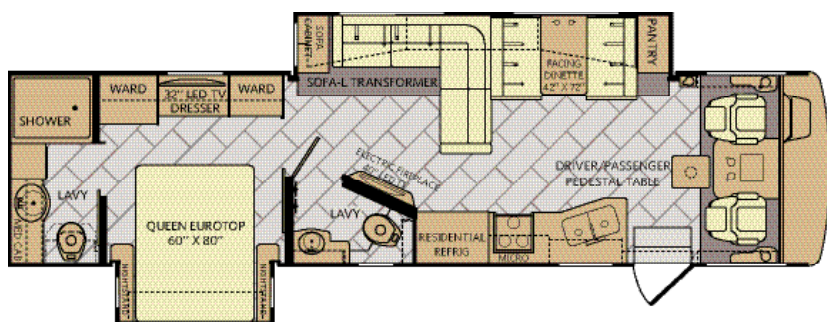
34T

Options: 113, 126, 220, 833



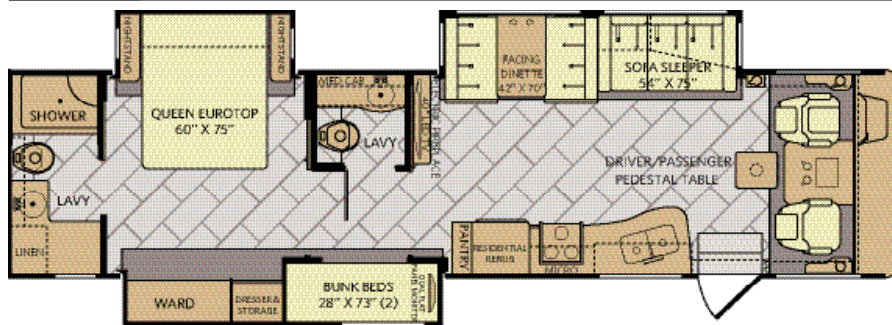
35K

Options: 113, 126, 220, 833, 852



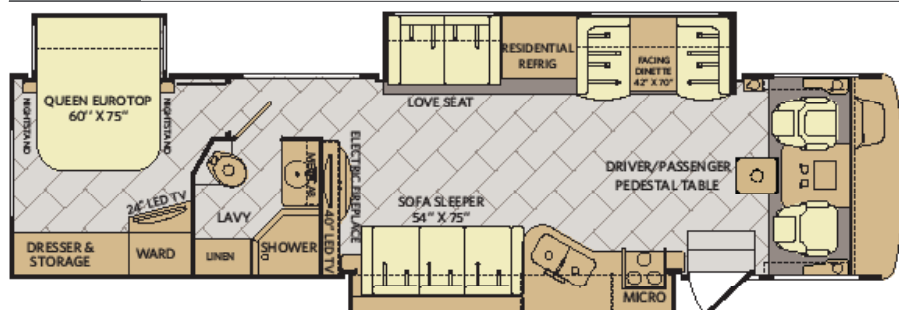
36H

Options: 113, 126, 220, 833, 852



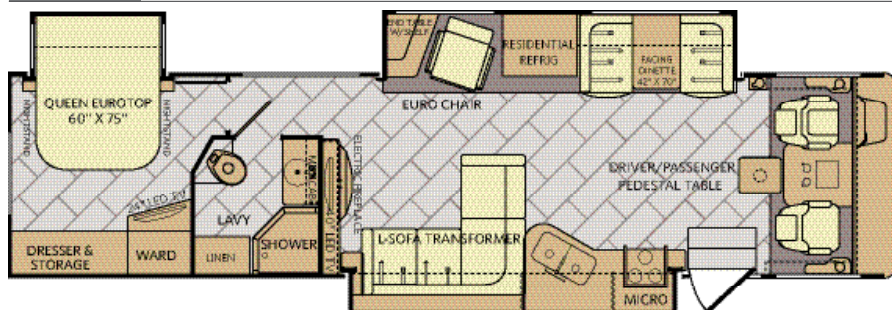
36X

Options: 113, 126, 220, 833

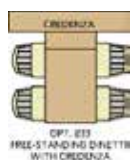


36Y

Options: 113, 126, 220, 833



Available Options





America's favorite motorhomes.

YOUR LOCAL DEALER



DISCLAIMERS

1. GVWR (Gross Vehicle Weight Rating) is the maximum permissible weight of this fully loaded motor home. The GVWR is equal to or greater than the sum of the (UVW) unloaded vehicle weight plus the (OCCC) occupant cargo-carrying capacity.
 2. GAWR (Gross Axle Weight Rating) is the maximum permissible loaded weight a specific axle is designed to carry.
 3. GCWR (Gross Combined Weight Rating) is the value specified by the motor home manufacturer as the maximum allowable loaded weight of this motor home with its towed vehicle. Towing and braking capacities may be different. Refer to Fleetwood and chassis manufacturer's manuals for complete information.
 4. Length measured from front bumper to rear bumper (excludes accessories).
 5. Excludes safety equipment and awnings.
 6. Motor homes feature a body width over 96" which will restrict your access to certain roads. Before purchasing, you should research any state and/or province road laws which may affect your usage.
 7. Tank manufacturer's listed water capacity (WC). Actual propane capacity is 80% of water listing as required by the safety code.
- † The chassis manufacturer recommends the installation of a supplemental brake control system to activate the brakes on the vehicle or trailer you are towing. Hitch receiver ratings expressed are maximum for the hitch receiver installed and may require the purchase of additional equipment that is dependent on the weight of the towed load. Consult with hitch receiver manufacturer for further information.
- * UVW and OCCC are found on the label containing the federal certification tag in each RV.

** All 2017 REV Recreation Group motorhomes include a limited one-year/15,000-mile coach warrant and three-year/45,000-mile structural warranty, whichever occurs first, and is fully transferable for the first 12 months.

FLEETWOOD MOTORHOME ASSOCIATION

As a Fleetwood RV owner, you're invited to become a member of the Fleetwood Motorhome Association (FMA). Becoming a member is the perfect way to meet other Fleetwood owners who love to travel across America and share in the RV lifestyle. Visit the FMA website at www.fma4fun.org to learn more and join the fun.

CONTACT US

To locate a dealer near you, visit our website at www.fleetwoodrv.com or call 1-800-322-8216. We can also be contacted at Fleetwood RV Customer Relations, P.O. Box 1007, Decatur, IN 46733.

IMPORTANT—PLEASE READ: Product information, photography and illustrations included in this publication were as accurate as possible at the time of printing. For further product information and changes, please visit our website at www.fleetwoodrv.com or contact your local Fleetwood RV dealer. Prices, materials, design and specifications are subject to change without notice. All weights, fuel, liquid capacities and dimensions are approximate. Fleetwood RV has designed its recreational vehicles to provide a variety of uses for its customers. Each vehicle features optimal seating, sleeping, storage and fluid capacities. The user is responsible for selecting the proper combination of loads (i.e., occupants, equipment, fluids, cargo, etc.) to ensure that the vehicle's capacities are not exceeded.

CHASSIS

MODEL	33C	34T	35K	36H	36X	36Y
Wheelbase (inches)	208"	228"	228"	242"	242"	242"
GVWR (lbs) ¹	22,000	22,000	22,000	22,000	24,000	24,000
Front GAWR (lbs) ²	8,000	8,000	8,000	8,000	9,000	9,000
Rear GAWR (lbs) ²	15,000	15,000	15,000	15,000	15,500	15,500
GCWR (lbs) ³	26,000	26,000	26,000	26,000	30,000	30,000
Hitch Rating Weight (lbs) ¹	5,000	5,000	5,000	5,000	5,000	5,000
Tongue Weight (lbs) ⁴	500	500	500	500	500	500
Fuel Capacity (gal)	80	80	80	80	80	80

POWER PLATFORM® CHASSIS

Model: Ford®
 Engine: 6.8L Triton V10
 Transmission: Ford®, 6-Speed, Automatic w/Overdrive

Alternator: 175 Amp
 Torque: 460 lb.-ft. @ 3,000 RPM
 Horsepower: 320 HP @ 3,900 RPM

DIMENSIONS AND CAPACITIES

MODEL	33C	34T	35K	36H	36X	36Y
Overall Length (inches) ⁴	34' 3"	35' 5"	36' 3"	37' 7"	37' 7"	37' 7"
Overall Height (with A/C)	12' 10"	12' 10"	12' 10"	12' 10"	12' 10"	12' 10"
Overall Width (maximum) ^{5,6}	102"	102"	102"	102"	102"	102"
Interior Height (maximum)	84"	84"	84"	84"	84"	84"
Interior Width (maximum)	96"	96"	96"	96"	96"	96"
Patio Awning Width (feet & inches)	17'	17'	17'	17'	17'	17'
Interior Storage (cu. ft.)	123	123	126	146	117	121
Exterior Storage (cu. ft.)	160	165	180	170	166	166
Fresh Water Holding Tank (gal)	100	100	100	100	100	100
Grey Water Holding Tank (gal)	58	58	58	58	58	58
Black Water Holding Tank (gal)	42	42	42	42	42	42
Appliance Propane Tank (gal) (WC) ⁷	25	25	25	25	25	25
Water Heater Tank (gal)	10	10	10	10	10	10

